

## #8 Elite Fitness News: June 2022

no-reply@newsfromyour.club <no-reply@newsfromyour.club>

**Welcome to issue 8 of our monthly newsletter keeping you up to date with all things Elite.**

---



Hi

On the 19 May our Elite family grew by one more. Congratulations to Jake and Fiona on the birth of their handsome baby boy Jenson. A few weeks early, he obviously couldn't wait to join the world and we wish the future Mr and Mrs Harris a wonderful life with the latest edition to the family ❤️

Last month we shared a change to our entry system that would allow you to bring family or friends who aren't members outside our reception hours. We're pleased that shortly after this announcement the system went live.

Non members can now purchase guest passes online in advance of arriving at the gym and can enjoy all that Elite has to offer, including 24 hour access, by entering a unique pin code into the keypad on arrival.

The addition of this functionality has presented an opportunity to review our staffed hours. From June our new Saturday reception hours will be 9am to 1pm.

This change will help us make sure we are focusing our efforts in the areas where they can have the greatest impact, helping us to continue to grow and develop while making sure we have people on hand during our busiest times to welcome you through the doors.

Technological advances have been a key driver in our most significant improvements over the last year or so and we'll now be looking at other technologies to bring about even more developments.

---

**WIN A 12 CAN VARIETY PACK OF GRENADE ENERGY**

---



It's really easy to enter! Simply purchase your favourite Grenade product, share an image or video in the gym with that product to your socials and tag us.

We may even have a surprise bonus prize for the best or most amusing entry.

The winner or winners will be announced after the June bank holiday.

---

## JUNE DEALS

---



Try the new chocolate peanut butter candy whey protein shake for just £1.50.

Packing 25g of protein for just 120 calories per scoop.

Enjoy this low sugar protein kick plus an extra £1 back in your pockets throughout June.



10% off our clothing range when purchased online.

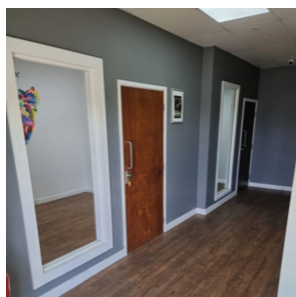
Use code: ELITEFITNESS at check out

Grab yourself one of our Elite T-shirts. Available in Unisex, ladies cut and long body.

**SHOP NOW**



Thursday 2 June and Friday 3 June are bank holidays in honour of the Queen's Jubilee. Our reception hours will be 9am - 1pm on both days. The gym remains, as always, 24 hours.



Looking for a room to rent? We have 2 available for anyone looking to expand their business and have a hub conveniently located at a gym with high foot traffic. [For more information drop us an email.](#)



A reminder to please make sure that you put your weights away when finished with them. To take care of the gym as if it were your own is a basic element of gym etiquette that goes a long way.

---

## FOLLOW US SOCIAL MEDIA FOR MORE REGULAR UPDATES

---



**FACEBOOK**

**INSTAGRAM**



---

Having trouble viewing images? Please download email or view on our [website](#)